

LONGRANGE- eprinomectin injection, solution
Merial, Inc.

LONGRANGE®
(eprinomectin)

Extended-Release Injectable Parasiticide
5% Sterile Solution

For the Treatment and Control of Internal and External Parasites of Cattle on Pasture with Persistent Effectiveness

Not for use in female dairy cattle 20 months of age or older, including dry dairy cows. Not for use in calves to be processed for veal.

Not for use in breeding bulls, or in calves less than 3 months of age.

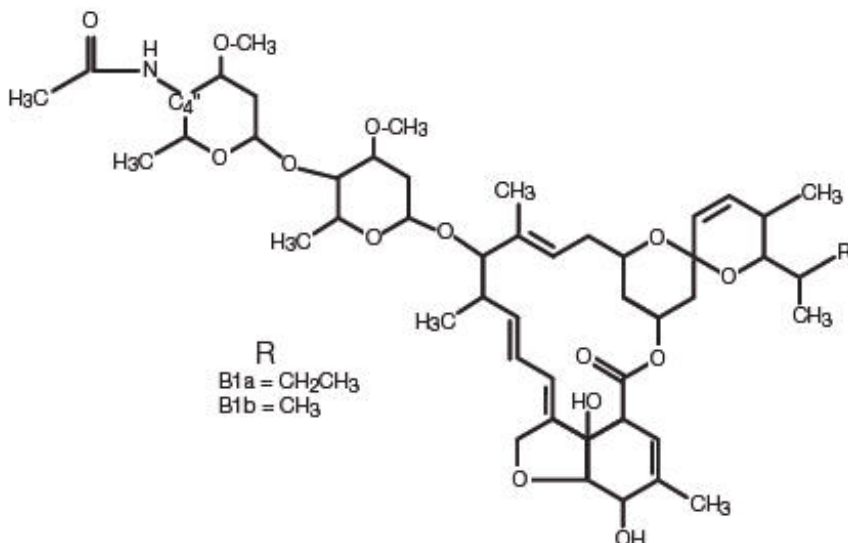
Not for use in cattle managed in feedlots or under intensive rotational grazing.

CAUTION: Federal law restricts this drug to use by or on the order of a licensed veterinarian.

DESCRIPTION

LONGRANGE® (eprinomectin) is a ready-to-use, sterile injectable preparation containing eprinomectin, a member of the macrocyclic lactone class of antiparasitics. Each mL of LONGRANGE contains 50 mg of eprinomectin in a co-solvent system of N-methyl-2-pyrrolidone (30% v/v) and triacetin (qs), along with 50 mg of poly-lactide-co-glycolic-acid 75:25 (PLGA), a polymer that allows a slow release of eprinomectin from the formulation, thereby maintaining a prolonged duration of product effectiveness. Butylated hydroxytoluene (0.2 mg/mL) acts as an antioxidant in the formulation.

The chemical name of eprinomectin is 4''-deoxy-4''-epiacetyl-amino-avermectin B₁. It is a semi-synthetic member of the avermectin family of compounds consisting of a mixture of two homologous components, B_{1a} and B_{1b}, which differ by a single methylene group at C₂₆.



INDICATIONS FOR USE

LONGRANGE, when administered at the recommended dose volume of 1 mL per 110 lb (50 kg) body weight, is effective in the treatment and control of the following internal and external parasites of cattle:

Gastrointestinal Roundworms	Lungworms
<i>Bunostomum phlebotomum</i> – Adults and L ₄	<i>Dictyocaulus viviparus</i> – Adults
<i>Cooperia oncophora</i> – Adults and L ₄	
<i>Cooperia punctata</i> – Adults and L ₄	
<i>Cooperia surnabada</i> – Adults and L ₄	Grubs
<i>Haemonchus placei</i> – Adults	<i>Hypoderma bovis</i>
<i>Oesophagostomum radiatum</i> – Adults	Mites <i>Sarcoptes scabiei</i> var. <i>bovis</i>
<i>Ostertagia lyrata</i> – Adults	
<i>Ostertagia ostertagi</i> – Adults, L ₄ , and inhibited L ₄	
<i>Trichostrongylus axei</i> – Adults and L ₄	
<i>Trichostrongylus colubriformis</i> – Adults	

Persistent Activity

LONGRANGE has been proven to effectively protect cattle from reinfection with the following parasites for the indicated amounts of time following treatment:

Parasites	Durations of Persistent Effectiveness
Gastrointestinal Roundworms	
<i>Bunostomum phlebotomum</i>	150 days
<i>Cooperia oncophora</i>	100 days
<i>Cooperia punctata</i>	100 days
<i>Haemonchus placei</i>	120 days
<i>Oesophagostomum radiatum</i>	120 days
<i>Ostertagia lyrata</i>	120 days
<i>Ostertagia ostertagi</i>	120 days
<i>Trichostrongylus axei</i>	100 days
Lungworms	
<i>Dictyocaulus viviparus</i>	150 days

DOSAGE AND ADMINISTRATION

LONGRANGE® (eprinomectin) should be given only by subcutaneous injection in front of the shoulder at the recommended dosage level of 1 mg eprinomectin per kg body weight (1 mL per 110 lb body weight).

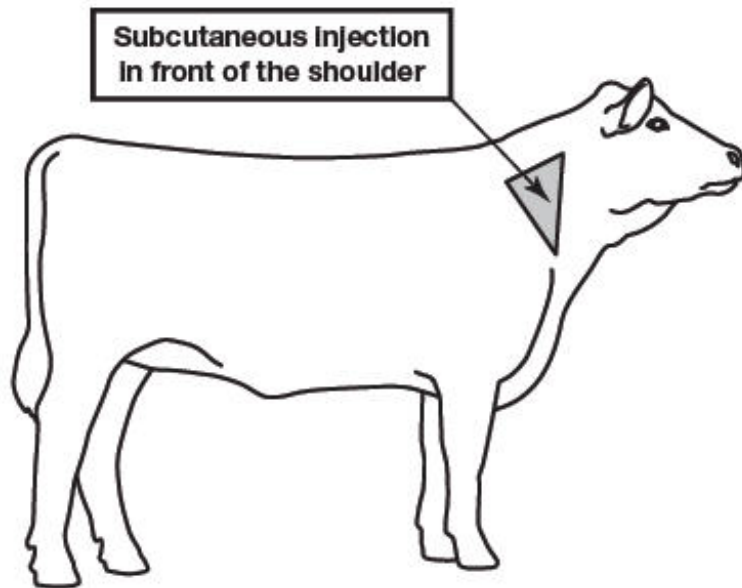
Each mL of LONGRANGE contains 50 mg of eprinomectin, sufficient to treat 110 lb (50 kg) body weight. Divide doses greater than 10 mL between two injection sites to reduce occasional discomfort or site reaction.

Body Weight (lb)	Dose Volume (mL)
110	1
220	2
330	3
440	4
550	5
660	6

770	7
880	8
990	9
1100	10

LONGRANGE is to be given subcutaneously only. Animals should be appropriately restrained to achieve the proper route of administration. Inject under the loose skin in front of the shoulder (see illustration) using a 16 or 18 gauge, ½ to ¾ inch needle.

Sanitize the injection site by applying a suitable disinfectant. Clean, properly disinfected needles should be used to reduce the potential for injection site infections.



100 mL bottle size: Use only polypropylene syringes. Not for use with polycarbonate syringe material. If syringe material is not known, contact the syringe manufacturer prior to use for identification. Alternatively, a 50-mL polypropylene repeater syringe compatible with LONGRANGE may be used. To obtain a list of compatible equipment, contact Merial at 1-888-637-4251. Do not use beyond 3 months after stopper has been punctured. Discard bottle after 15 stopper punctures. LONGRANGE should not be stored in the repeater syringe.

250 mL and 500 mL bottle sizes: Use only automatic syringe equipment provided by Merial. To obtain compatible equipment, contact Merial at 1-888-637-4251 or your veterinarian. LONGRANGE should not be stored in automatic syringe equipment. Automatic syringe equipment should be thoroughly cleaned after each use. Discard bottle after one stopper puncture with draw-off spike.

Alternatively, a 50-mL polypropylene repeater syringe compatible with LONGRANGE may be used. To obtain a list of compatible equipment, contact Merial at 1-888-637-4251. When using a repeater syringe, do not use beyond 3 months after stopper has been punctured. Discard bottle after 15 punctures. LONGRANGE should not be stored in the repeater syringe.

No special handling or protective clothing is necessary.

WARNINGS AND PRECAUTIONS

Withdrawal Periods and Residue Warnings

Animals intended for human consumption must not be slaughtered within 48 days of the last treatment.

This drug product is not approved for use in female dairy cattle 20 months of age or older, including dry dairy cows. Use in these cattle may cause drug residues in milk and/or in calves born to these cows.

A withdrawal period has not been established for pre-ruminating calves. Do not use in calves to be processed for veal.

User Safety Warnings

Not for Use in Humans. Keep this and all drugs out of the reach of children. The material safety data sheet (MSDS) contains more detailed occupational safety information. To report adverse effects, to obtain an MSDS, or for assistance, contact Merial at 1-888-637-4251. For additional information about adverse drug experience reporting for animal drugs, contact FDA at 1-888-FDA-VETS, or <http://www.fda.gov/AnimalVeterinary>.

Animal Safety Warnings and Precautions

The product is likely to cause tissue damage at the site of injection, including possible granulomas and necrosis. These reactions have disappeared without treatment. Local tissue reaction may result in trim loss of edible tissue at slaughter.

Observe cattle for injection site reactions. If injection site reactions are suspected, consult your veterinarian. This product is not for intravenous or intramuscular use. Protect product from light. LONGRANGE® (eprinomectin) has been developed specifically for use in cattle only. This product should not be used in other animal species.

When to Treat Cattle with Grubs

LONGRANGE effectively controls all stages of cattle grubs. However, proper timing of treatment is important. For the most effective results, cattle should be treated as soon as possible after the end of the heel fly (warble fly) season. Destruction of *Hypoderma* larvae (cattle grubs) at the period when these grubs are in vital areas may cause undesirable host-parasite reactions, including the possibility of fatalities. Killing *Hypoderma lineatum* when it is in the tissue surrounding the esophagus (gullet) may cause salivation and bloat; killing *H. bovis* when it is in the vertebral canal may cause staggering or paralysis. These reactions are not specific to treatment with LONGRANGE, but can occur with any successful treatment of grubs. Cattle should be treated either before or after these stages of grub development. Consult your veterinarian concerning the proper time for treatment.

Environmental Hazards

Studies indicate that when eprinomectin comes in contact with soil, it readily and tightly binds to the soil and becomes inactive over time. Free eprinomectin may adversely affect fish and certain aquatic organisms. Do not contaminate water by direct application or by improper disposal of drug containers. Dispose of containers in an approved landfill or by incineration.

As with other avermectins, eprinomectin is excreted in the dung of treated animals and can inhibit the reproduction and growth of pest and beneficial insects that use dung as a source of food and for reproduction. The magnitude and duration of such effects are species and life-cycle specific. When used according to label directions, the product is not expected to have an adverse impact on populations of dung-dependent insects.

Not for use in cattle managed in feedlots or under intensive rotational grazing because the environmental impact has not been evaluated for these scenarios.

Other Warnings: Underdosing and/or subtherapeutic concentrations of extended-release anthelmintic products may encourage the development of parasite resistance. It is recommended that parasite resistance be monitored following the use of any anthelmintic with the use of a fecal egg count reduction test program.

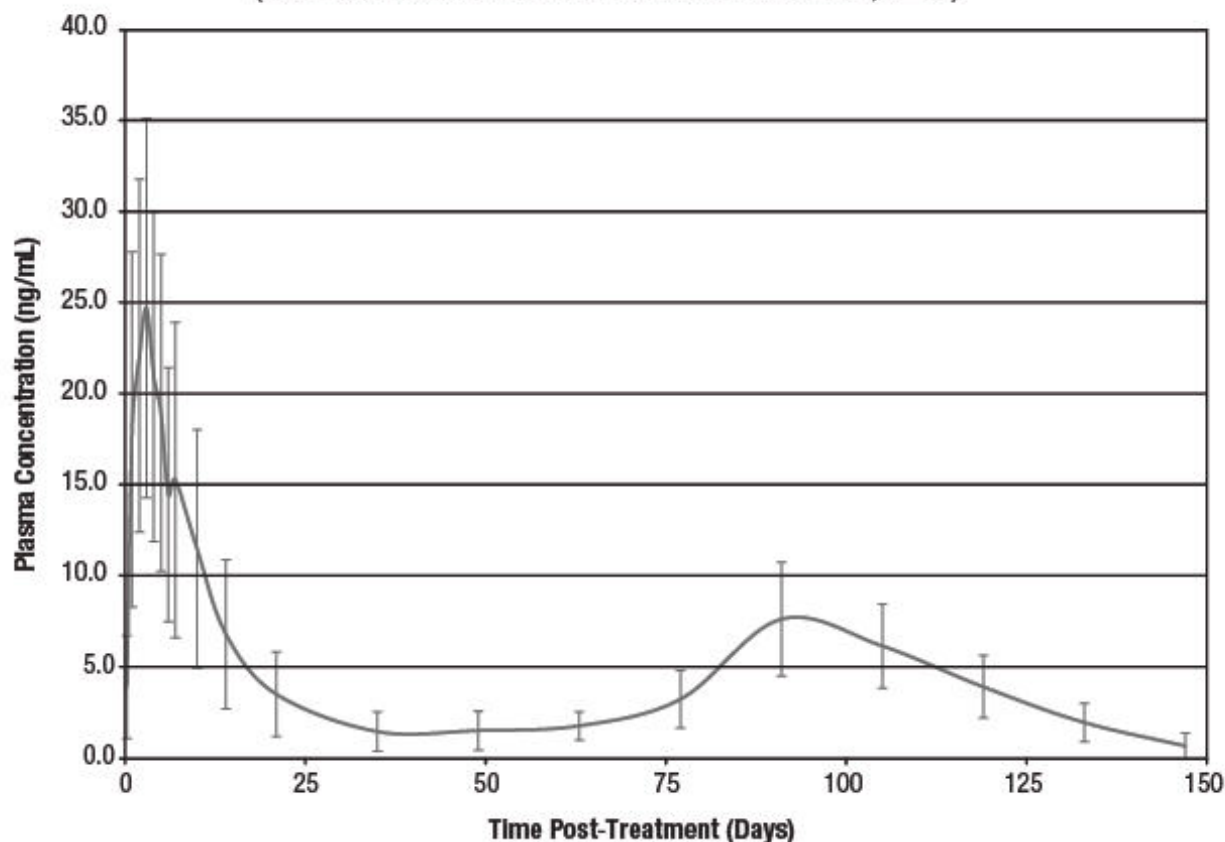
CLINICAL PHARMACOLOGY

Due to its unique formulation characteristics, when LONGRANGE is injected subcutaneously in the shoulder area of cattle, a polymeric PLGA matrix is formed. The biodegradable matrix solidifies in vivo to form an in situ forming gel, which allows a gradual release of eprinomectin from the formulation. The rate-limiting step is diffusion of the drug through the gel matrix. Because of its mechanism of release, absorption characteristics can be highly dependent upon the injection technique used and the corresponding surface to volume ratio of the gel.

Clinical efficacy of avermectins and milbemycins is closely related to their pharmacokinetic behavior, and the time of parasite exposure to active drug concentrations is relevant to obtain optimal and persistent antiparasitic activity (Lanusse et al., 1997; Lifschitz et al., 1999; Lifschitz et al., 2004; Shoop et al., 1996). Lifschitz et al. (1999) indicated that plasma concentrations between 0.5 and 1 ng/mL would represent the minimal drug level required for optimal nematocidal activity, while others have suggested minimum levels of 1 to 2 ng/mL. Pharmacokinetic studies of LONGRANGE in cattle indicate that effective plasma levels remain for an extended period of time (at least 100 days).

Mean Eprinomectin B_{1a} Plasma Concentration Versus Time Following a Single Subcutaneous Injection of LONGRANGE[®] at a Dose Rate of 1 mg Eprinomectin per kg Body Weight in Beef Cattle

(Arithmetic Mean \pm Standard Deviation of the Mean, n=42)



Mode of Action

The macrocyclic lactones have a unique mode of action. Compounds of this class bind selectively and with high affinity to glutamate-gated chloride ion channels that are present in invertebrate nerve and muscle cells. This leads to an increase in the permeability of the cell membrane to chloride ions with hyperpolarization of the nerve or muscle cell, resulting in paralysis and death of the parasite. Compounds of this class may also interact in other ligand-gated chloride ion channels, such as those gated by the neurotransmitter gamma-aminobutyric acid (GABA).

The margin of safety for compounds of this class is at least partially attributable to the fact that mammals do not have glutamate-gated chloride ion channels, and that the macrocyclic lactones have low affinity for other mammalian ligand-gated channels and do not readily cross the blood-brain barrier.

TARGET ANIMAL SAFETY

Clinical studies have demonstrated the wide margin of safety of LONGRANGE® (eprinomectin). Overdosing at 3 to 5 times the recommended dose resulted in a statistically significant reduction in average weight gain when compared to the group tested at label dose. Treatment-related lesions observed in most cattle administered the product included swelling, hyperemia, or necrosis in the subcutaneous tissue of the skin. The administration of LONGRANGE at 3 times the recommended therapeutic dose had no adverse reproductive effects on beef cows at all stages of breeding or pregnancy or on their calves.

Not for use in bulls, as reproductive safety testing has not been conducted in males intended for breeding or actively breeding. Not for use in calves less than 3 months of age because safety testing has not been conducted in calves less than 3 months of age.

HOW SUPPLIED

LONGRANGE is available in three ready-to-use glass bottle sizes. The 100, 250 and 500 mL bottles contain sufficient solution to treat 20, 50 and 100 head of 550 lb (250 kg) cattle, respectively. The 250 and 500 mL bottles are supplied in a removable plastic protector.

STORAGE

Store at 77° F (25° C) with excursions between 59° and 86° F (15° and 30° C). Protect from light.

NADA #141-327, Approved by FDA

Made in Canada.

Manufactured for Merial, Inc., Duluth, GA, USA.

®The Cattle Head Logo and ®LONGRANGE are registered trademarks of Merial, Inc.

©2017 Merial, Inc. All rights reserved.

1050-2889-07, Rev. 2/2017, 8LON016D

PRINCIPAL DISPLAY PANEL - 250 mL Bottle Carton

Product 72164

LONGRANGE®
(eprinomectin)

Extended-Release Injectable Parasiticide
5% Sterile Solution
For Subcutaneous Use in Cattle on Pasture
with Theraphase™

**For the Treatment and Control of
Internal and External Parasites of Cattle
on Pasture with Persistent Effectiveness**

**Not for use in cattle managed in feedlots or under
intensive rotational grazing.**

**CAUTION: Federal law restricts this drug to use by or on
the order of a licensed veterinarian.**

250 mL

NADA #141-327, Approved by FDA

MERIAL

Product 72164



LONGRANGE®

(eprinomectin)

Extended-Release Injectable Parasiticide
5% Sterile Solution

Lot No:
Exp. Date:

Product 72164



LONGRANGE®

(eprinomectin)

Extended-Release Injectable Parasiticide
5% Sterile Solution

For Subcutaneous Use in Cattle on Pasture

with Theraphase™



For the Treatment and Control of Internal and External Parasites of Cattle on Pasture with Persistent Effectiveness

Not for use in cattle managed in feedlots or under
intensive rotational grazing.

CAUTION: Federal law restricts this drug to use by or on
the order of a licensed veterinarian.

250 mL

NADA #141-327, Approved by FDA



INDICATIONS FOR USE

LONGRANGE® (eprinomectin), when administered at the recommended dose volume of 1 mL per 110 lb (50 kg) body weight, is effective in the treatment and control of the following internal and external parasites of cattle:

Gastrointestinal Roundworms	Lungworms
<i>Bunostomum phlebotomum</i> – Adults and L4	<i>Dictyocaulus viviparus</i> – Adults
<i>Cooperia oncophora</i> – Adults and L4	
<i>Cooperia punctata</i> – Adults and L4	
<i>Cooperia surnabada</i> – Adults and L4	Grubs
<i>Haemonchus placei</i> – Adults	<i>Hypoderma bovis</i>
<i>Oesophagostomum radiatum</i> – Adults	Mites
<i>Ostertagia lyrata</i> – Adults	
<i>Ostertagia ostertagi</i> – Adults, L4, and inhibited L4	
<i>Trichostrongylus axei</i> – Adults and L4	
<i>Trichostrongylus colubriformis</i> – Adults	<i>Sarcoptes scabiei</i> var. <i>bovis</i>

Persistent Activity

LONGRANGE has been proven to effectively protect cattle from reinfection with the following parasites for the indicated amounts of time following treatment:

Parasites	Durations of Persistent Effectiveness
Gastrointestinal Roundworms	
<i>Bunostomum phlebotomum</i>	150 days
<i>Cooperia oncophora</i>	100 days
<i>Cooperia punctata</i>	100 days
<i>Haemonchus placei</i>	120 days
<i>Oesophagostomum radiatum</i>	120 days
<i>Ostertagia lyrata</i>	120 days
<i>Ostertagia ostertagi</i>	120 days
<i>Trichostrongylus axei</i>	100 days
Lungworms	
<i>Dictyocaulus viviparus</i>	150 days



Extended-Release Injectable Parasiticide
5% Sterile Solution

DOSAGE AND ADMINISTRATION

Administer only by subcutaneous injection in front of the shoulder at the recommended dose rate of 1 mg eprinomectin per kg body weight (1 mL per 110 lb body weight). Divide doses greater than 10 mL between two injection sites to reduce occasional discomfort or site reaction.

Use only automatic syringe equipment provided by Merial or a polypropylene repeater syringe compatible with LONGRANGE.

LONGRANGE should not be stored in the automatic or repeater syringe.

Read package insert for complete product information.

Body Weight (lb)	Dose Volume (mL)
110	1
220	2
330	3
440	4
550	5
660	6
770	7
880	8
990	9
1100	10

WARNINGS AND PRECAUTIONS

WITHDRAWAL PERIODS AND RESIDUE WARNINGS

Animals intended for human consumption must not be slaughtered within 48 days of the last treatment. This drug product is not approved for use in female dairy cattle 20 months of age or older, including dry dairy cows. Use in these cattle may cause drug

USER SAFETY WARNINGS

Not for Use in Humans. Keep this and all drugs out of the reach of children. The material safety data sheet (MSDS) contains more detailed occupational safety information. To report adverse effects, to obtain an MSDS, or for assistance, contact Merial at 1-888-637-4251.

Not for use in female dairy cattle 20 months of age or older, including dry dairy cows. Not for use in calves to be processed for veal.

Not for use in breeding bulls, or in calves less than 3 months of age.

Other Warnings: Underdosing and/or subtherapeutic concentrations of extended-release anthelmintic products may encourage the development of parasite resistance. It is recommended that parasite resistance be monitored following the use of any anthelmintic with the use of a fecal egg count reduction test program.

LONGRANGE® (eprinomectin) has been formulated specifically for subcutaneous injection in cattle and should not be given by other routes of administration or to species other than cattle.

STORAGE, HANDLING, AND DISPOSAL

Store at 77° F (25° C) with excursions between 59° and 86° F (15° and 30° C). Protect from light.

Do not contaminate water by direct application or by improper disposal of drug containers. Dispose of containers in an approved landfill or by incineration.

Made in Canada.

Manufactured for Merial, Inc., Duluth, GA, USA.

©The Cattle Head Logo and ©LONGRANGE are registered trademarks and ™The Raphase is a trademark of Merial, Inc. ©2015 Merial, Inc. All rights reserved.

1030-2894-04, Rev. 2/2015, 8LON0 02B



dairy cows. Use in these cattle may cause drug residues in milk and/or in calves born to these cows. A withdrawal period has not been established for pre-ruminating calves. Do not use in calves to be processed for veal.



LONGRANGE

eprinomectin injection, solution

Product Information

Product Type	PRESCRIPTION ANIMAL DRUG	Item Code (Source)	NDC:50604-7216
Route of Administration	SUBCUTANEOUS		

Active Ingredient/Active Moiety

Ingredient Name	Basis of Strength	Strength
eprinomectin (UNII: 75KP30FD8O) (eprinomectin - UNII:75KP30FD8O)	eprinomectin	50 mg in 1 mL

Inactive Ingredients

Ingredient Name	Strength
methylpyrrolidone (UNII: JR9CE63FPM)	
triacetin (UNII: XHX3C3X673)	
butylated hydroxytoluene (UNII: 1P9D0Z171K)	

Packaging

#	Item Code	Package Description	Marketing Start Date	Marketing End Date
1	NDC:50604-7216-1	1 in 1 CARTON		
1		50 mL in 1 BOTTLE, GLASS		
2	NDC:50604-7216-2	1 in 1 CARTON		
2		250 mL in 1 BOTTLE, GLASS		
3	NDC:50604-7216-3	1 in 1 CARTON		
3		500 mL in 1 BOTTLE, GLASS		
4	NDC:50604-7216-4	1 in 1 CARTON		
4		100 mL in 1 BOTTLE, GLASS		

Marketing Information

Marketing Category	Application Number or Monograph Citation	Marketing Start Date	Marketing End Date
NADA	NADA141327	07/17/2012	

Labeler - Merial, Inc. (799641006)

Revised: 11/2017

Merial, Inc.